

Food Waste Disposer: IMC 725

Construction

IMC 725 is a compact and space saving solution for welding into table. Well suited for small and medium size kitchens.

Equipment / features:

- Wall mounted IP65 control box
- Automatic water control
- Metal baffle and time delayed interlock system
- Rubber housing to minimize noise.
- Automatic thermal overload to protect motor.
- Manually reversible motor for extended operational life.

Use

IMC Food Waste Disposers offer excellent throughput and performance at low operating cost with a high degree of operator safety.

A long-life motor combined with special alloy grinding elements enable a variety of soft food waste, including plate scrapings and vegetable peelings to be disposed of quickly and safely.



Voltages:

230V single phase 50 or 60Hz
230/400/440V 3-phase

Options:

Class A airbreak
Magnetic cutlery saver
700 series food waste disposers are also available as free standing unit - See separate leaflet.

Capacity:

400 kg/hour or 850 covers pr. sitting

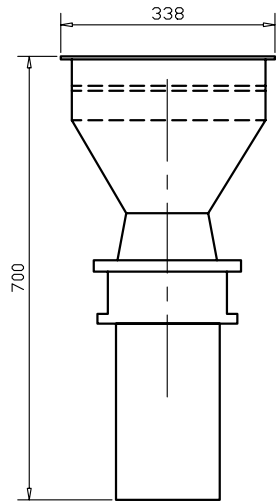
- **EASY CLEANING**
- **ENERGY EFFICIENT**
- **SAFE OPERATION**
- **COMPACT DESIGN**
- **RECYCLABLE**

01.11

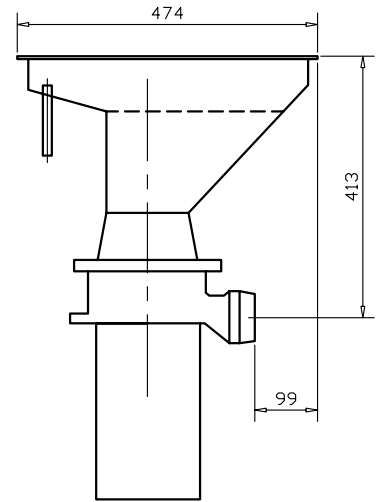


<p>Voltage 440/3/60 <i>230</i></p>	<p>Rated Power 1,1kW</p>	<p>Recommended Weight Fuse 10A</p>	<p>35kg</p>	<p>FOOD WASTE DISPOSER IMC 725</p>
--	------------------------------	--	-------------	--

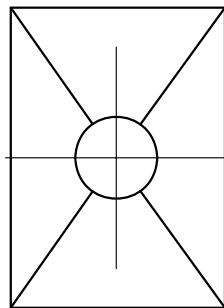
FRONT VIEW



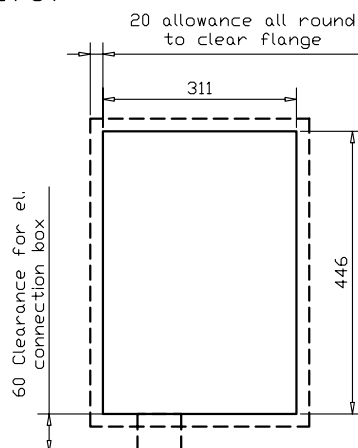
LEFT VIEW



TOP VIEW



CUTOUT IN TABLETOP

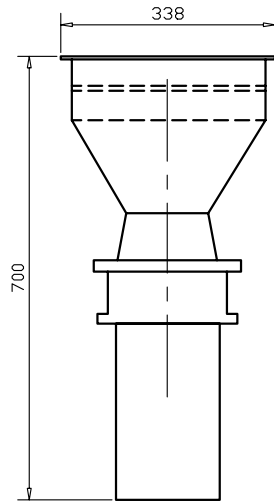


Dimension of cutout in tabletop
for welded fitting

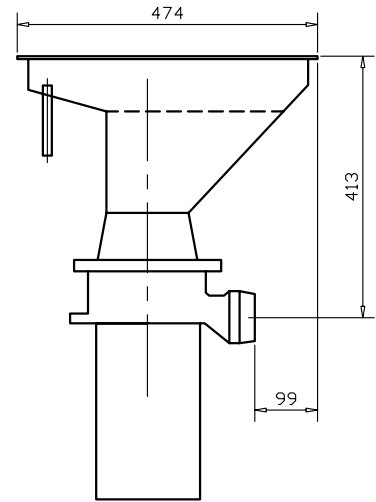
Voltage	Rated Power	Current	Weight
230/1/60	1,1kW	4,78A	35kg

**FOOD WASTE DISPOSER
IMC 725**

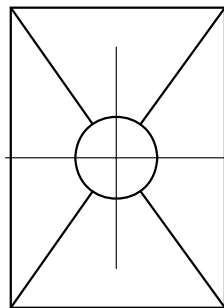
FRONT VIEW



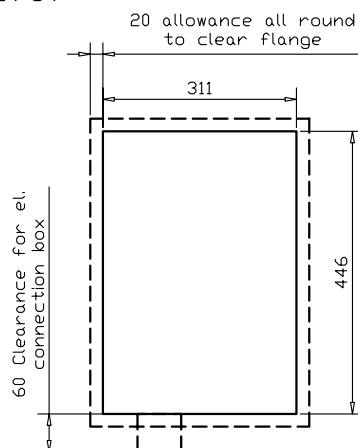
LEFT VIEW



TOP VIEW



CUTOUT IN TABLETOP



Dimension of cutout in tabletop
for welded fitting